

Yamato®



VFK2560-8

4 Needle 6 Thread Flatbed Flatseamer
with Active Thread Control



ISO9001:2008
JQA-QM6412

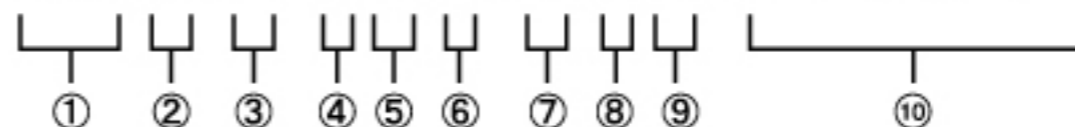
Yamato®

VFK2560-8

4 Needle 6 Thread Flatbed Flatseamer
with Active Thread Control

■ Numbering on Model:

VFK2560-152M-02M-8/K1/SC30/FL



- ① Symbol of Series
- ② Class No.
- ③ Submodel by Application
- ④ Top Cover Thread Mechanism : 1 = with Top Cover Thread Mechanism
- ⑤ Needle Distance : 52 = 5.2 mm , 60 = 6.0 mm
- ⑥ Shape of Stitch Tongue on Stitch Plate
- ⑦ Fabric Trimming Method : 02 = Both Cut
- ⑧ Applicable Fabric Weight : M = Lightweight to Mediumweight Fabric
- ⑨ Active Thread Control : -8 = with Active Thread Control
- ⑩ Device(s)

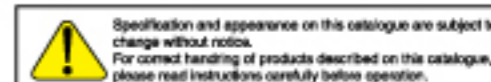
■ Specifications

MY1016H SAM10 4	6	5.2 6.0	1.4~3.6		10.0 1:1.0	5.0	31	4,200

■ Devices

- SC30** : Lint Collection Pipe (*1)
- FL** : Air-operated Presser Foot Lifter
- K1** : Automatic Thread Chain Trimmer

(*1) : SC30 is included as standard accessory.
Separate Lint Collector is needed.



YAMATO SEWING MACHINE MFG. CO., LTD.
<http://www.yamato-sewing.com>

HEAD OFFICE
4-12, 4-CHOME, NISHI-TENMA, KITA-KU, OSAKA, 530-0047, JAPAN
TEL:+81-6-6364-6621/FAX:+81-6-6364-7185/E-mail:export-dept@yamato-sewing.com

YAMATO U.S.A. INC. TEL:+1-803-548-0334/FAX:+1-803-548-0405
YAMATO EUROPE GmbH TEL:+49-40-350347-0/FAX:+49-40-354371/E-mail:sales@yamato.de
YAMATO (HONG KONG) CO., LTD. TEL:+852-2721-0251/FAX:+852-2723-0444/E-mail:yamato@yamato-sewing.com.hk
豊清機(香港)有限公司 东莞代表处 TEL:+86-769-86231363/FAX:+86-769-86231362
大和縫紉機(宁波)有限公司 TEL:+86-574-86800518,86800558/FAX:+86-574-86800555/E-mail:marketing@yamato-china.com
大和縫紉機製造株式会社 青島事務所 TEL:+86-532-85783175/FAX:+86-532-85783172
大和縫紉機製造株式会社 上海事務所 TEL:+86-21-64400017,64400019/FAX:+86-21-64400021
YAMATO SINGAPORE PTE LTD. TEL:+65-6287-1950/FAX:+65-6287-1028/E-mail:sales@yamato-sewing.com.sg
M/S. YAMATO SINGAPORE PTE LTD., INDIA LIAISON OFFICE (TIRUPUR BRANCH) TEL:+91-421-4333701/FAX:+91-421-4333702/E-mail:yamato-sewing@airtelbroadband.in
M/S. YAMATO SINGAPORE PTE LTD., INDIA LIAISON OFFICE (DELHI BRANCH) TEL:+91-11-41803280/FAX:+91-11-40574681
YAMATO SINGAPORE PTE LTD., CUSTOMER SERVICE CORRESPONDENT IN JAKARTA, INDONESIA FAX:+62-21-781-8727
YAMATO SINGAPORE PTE LTD., BANGLADESH LIAISON OFFICE TEL:+88-02-899-1864/FAX:+88-02-899-1865
YAMATO MEXICO OFFICE TEL:+52-55-5784-9090/FAX:+52-55-5578-1470
THE RESIDENT REPRESENTATIVE OFFICE OF YAMATO SEWING MACHINE MFG. CO., LTD IN HO CHI MINH CITY TEL:+84-8-62956057/FAX:+84-8-38113384

Catalogue No. 2043E Edition No. 2 01/2012

Your Practical Solution for 4 Needle Flat Seaming Operation with Fabric Trimming, for Athletic Wear is Here!

VFK2560-8

4 Needle 6 Thread Flatbed Flatseamer with Active Thread Control

■ Why "Flatbed" Flatseamer?

Assembly of recent athletic wear, designed to be made with a lot of small parts, using feed-off-the-arm flatseamer, sometimes take huge downtime, as operators have to stop the machine frequently to pick up the work, which have been fallen from the cylinder.

Yamato VFK brings you the solution!

Its flatbed improves productivity of such operations a lot, as the fabric is much more stable and easier to handle.



Feed-off-the-arm

Which looks faster & easier?



Flatbed

■ High Stretch!

"Active Thread Control" enables soft & stretchable (200%+) seam, suitable for performance athletic garments, without complicated adjustments, required for current machines.



200%+ stretch!

■ Pucker-free

More reverse differential ratio than usual feed-off-the-arm flatseamer helps neat finish, especially in case of sewing along lengthwise grain of stretchable synthetic fabric.

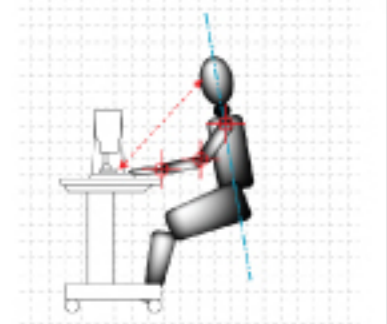
■ Easy to be a Professional!

Thanks to easier and stress-free operation coming from:

- ▶ rather familiar machine shape
- ▶ natural posture for operation
- ▶ better sight at sewing area and the work

even your single needle lock stitch operator can make perfect flatseaming in a very short period of time.

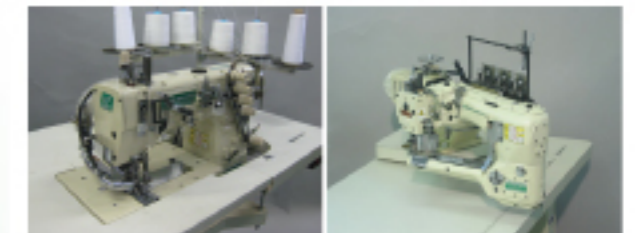
With Yamato VFK, you can be more flexible against variation of demands for flatseam.



■ Recommended Combination

YAMATO VFK2560 for joining open pieces + YAMATO FD-62DRY, "Magic Dry" Feed-off-the-Arm Flatseamer for closing garments and/or 3D-curbs.

This is your "real solution" for recent increasing demands for garments with flatseam, using stretchable fabric!



By making the best use of YamatoVFK, which is easier in both operation and maintenance, You can add more value on your works!

